

Chris van Uffelen

Offices



BRAUN



Address: 6, rue Galilée, 1400 Yverdon-les-Bains, Switzerland. **Client:** Etablissement Cantonal d'Assurance (ECA). **Completion:** 2011. **Gross floor area:** 8,201 m². **Main materials:** concrete, glass, textile panels. **Climatization:** geothermal heat pump, photovoltaic roof panels. **Types of offices:** individual, group, open-plan, combi-office. **Conference rooms:** 1/20 people. **Setting:** industrial.

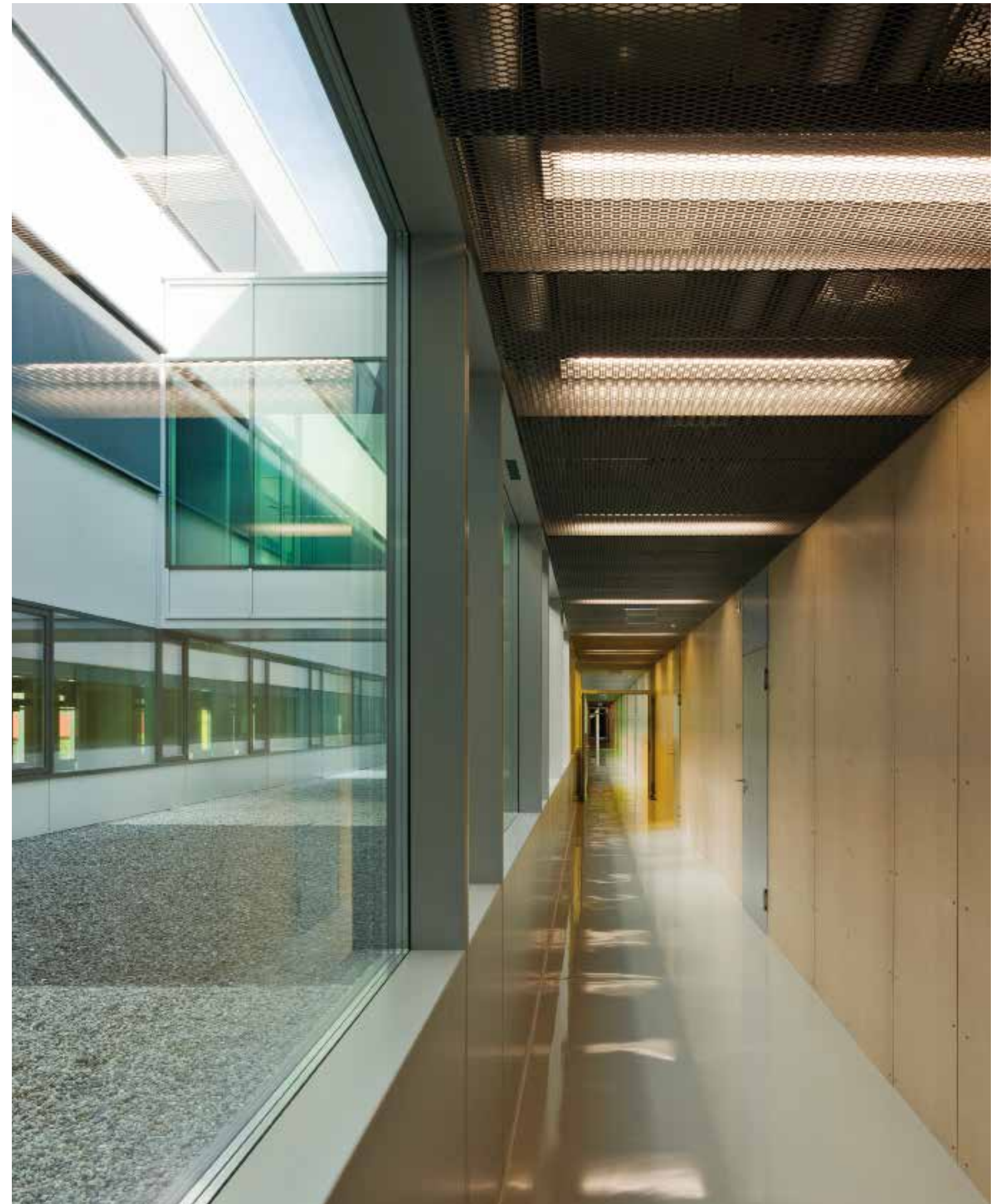


CEI 3 – Centre d'Entreprise et d'Innovation

Yverdon-les-Bains

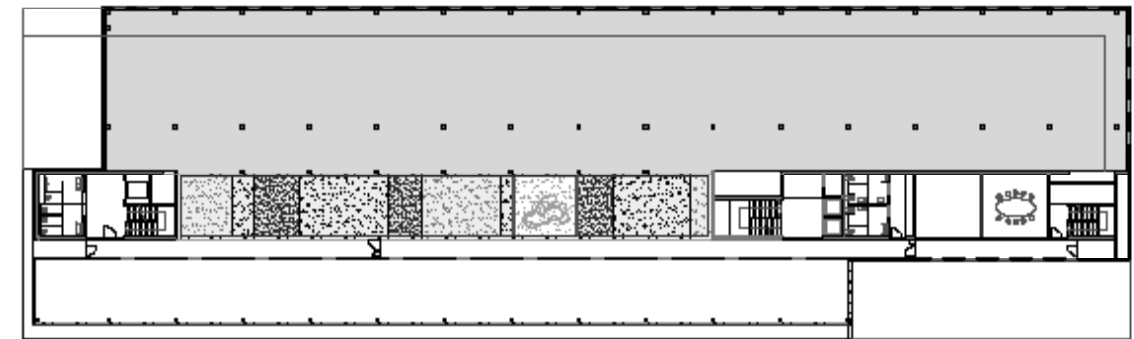
The new CEI 3 office building offers flexible surfaces that can be rented to companies wishing to develop research activities relating to new technologies. The services zone, including vertical circulations and service shafts, frees up workspaces by guaranteeing spatial flexibility. The building's skin expresses the diversity and complexity of the program. By balancing the proportion of triple-glazed and unglazed surfaces, the building design meets Swiss "Minergie" standards. A heat pump, supplied with thermal probes introduced into the foundation piles, satisfies 40 percent of heating and cooling requirements during the summer period. The roof is covered with an innovating system of double-sided photovoltaic panels, the white gravel surface of which reflects the light, increasing the energy efficiency by 20 percent.

↑ | Main entrance
→ | Proportion of glazing, corresponds to Swiss Minergie standards





↑ | Factory hall
 ↓ | Ground floor plan



↑ | First floor plan
 ↓ | Building, within surroundings

